

FCP MARINE

Floating Concrete Pontoons



As FCP Marine, we are proud to be a pioneer and reliable company in the floating dock systems sector since 2018. With our experienced and expert team, we work to design, build and float all structures on water, including floating piers. In order to add value to our projects, we offer more than concrete and steel and make your dreams float.

 **Istanbul Office: Seyranteppe Mah. Cesur Sk. No:71 Kat:1-2 Kağıthane / İstanbul**

 **Factory: Söğütlü Mah. Şehitlik Cad. No: 49/1A Seyhan / Adana**

 **Phone: 0 (212) 294 32 72**

 **Gsm: 0(538) 293 38 09**

 **E-mail: info@fcpmarine.com.tr / info@fcpmarine.com.tr**

ABOUT US

As FCP Marine, we are proud to be a pioneer and reliable company in the floating scaffolding systems sector since 2018. With our experienced and expert team, we design, build and float all structures on water, especially floating piers. In order to add value to our projects, we are not limited to concrete and steel, we carry your dreams to the water. We continue to be a preferred business partner in the sector by offering environmentally friendly, sustainable and high-performance solutions in every project. As FCP Marine, we are shaping the living spaces of the future on water today and reinforcing our leadership in this field day by day. With our trained personnel and expertise, we focus on human health, respect for the environment and high quality standards in floating scaffolding systems. We continuously improve occupational health and safety measures in our projects and carry out systematic efforts to protect the ecosystem and prevent pollution. We aim to continuously increase the satisfaction of our customers by exceeding their current and future expectations. We closely follow innovations, integrate the latest technologies into our projects, and continue our research and development activities to offer the most suitable solutions for the needs of the sector. FCP Marine offers creative and impressive design solutions that turn your dreams into reality with our talented and experienced design team. We add value to your projects by adopting aesthetic, functional and environmentally friendly principles. By using the latest equipment, materials and technologies, we constantly follow the developments in the sector and integrate them into our projects with the most effective methods. With innovative solutions, aesthetic and environmentally friendly designs, FCP Marine brings your projects on the water to life. We aim for sustainable success in the sector by prioritizing the expectations of our business partners and customers.

COMPANY GENERAL INFORMATION

30+ Employees

2000 m² Open Manufacturing Area and 2000 m² Closed Manufacturing Area

Factory Address: Söğütlü Mah. Şehitlik
Cad. No: 49/1A Seyhan / Adana

İstanbul Office: Seyrantepe Mah. Cesur Sk.
No:71 Kat:1-2 Kağıthane / İstanbul

Phone: +90 (212) 294 32 72
Gsm: +90 (538) 293 38 09



FLOATING SCAFFOLDIN MODELS

FLOATING SCAFFOLDIN MODELS



FcpMini Model

While floatable structures are produced economically and serially in the factory environment, field installation is supported by extremely practical, fast and durable concrete structural elements. FcpMini, thanks to its portable structure, one-piece appearance and the use of concrete, allows for versatile solutions and is our most preferred product group. In addition, thanks to the modular concrete structure, it can be easily customized and expanded in desired sizes and shapes.

FcpGrand Model

At FCP Marine, we develop concrete floating structure solutions that offer high bearing capacity, freeboard and durability performance with our FcpGrand product line. These concrete structures, which will be your reliable solution partner in large projects, are especially ideal for commercial and industrial applications. We offer a reliable solution with high durability and comfort with our FcpGrand model to create your large structures such as floating marina, floating house, floating office, floating hotel, floating bridge, floating solar power plant or floating restaurant.



PRODUCT OPTIONS



FENDER

Fender is used for safe docking of floating vehicles. Available in wooden, rubber or polyurethane material.

WOODEN

An attractive and practical alternative, natural wood or composite wood can be used depending on your preference. The wood option offers thermal insulation and a natural look.

SPECIAL COATINGS

At FCP Marine, we offer custom coatings that can be freely designed according to your thoughts and dreams. With these coatings, you can customize your floating structure with any color, pattern or texture you want.

STABILIZATION SYSTEM

Stabilization Systems, in order to ensure that floating piers remain stable on the water, vaulted, anchored and piled according to variable water conditions.

PRODUCT OPTIONS



FENDER

Fender is used for safe docking of floating vehicles. Available in wooden, rubber or polyurethane material.

WOODEN

An attractive and practical alternative, natural wood or composite wood can be used depending on your preference. The wood option offers thermal insulation and a natural look.

SPECIAL COATINGS

At FCP Marine, we offer custom coatings that can be freely designed according to your thoughts and dreams. With these coatings, you can customize your floating structure with any color, pattern or texture you want.

STABILIZATION SYSTEM

Stabilization Systems, in order to ensure that floating piers remain stable on the water, vaulted, anchored and piled according to variable water conditions.

FLOATING SCAFFOLDIN MODELS

FcpSteel Model

With our FcpSteel product group, we offer an economical solution in calm water conditions thanks to its aesthetic appearance. Fast and easy installation thanks to its light weight. In this product group, which we produce from steel, epoxy paint coating or hot dip galvanization is used to provide resistance to fresh and salt water. It provides a stylish appearance thanks to the composite deck or wood veneer used on it.



PRODUCT OPTIONS

FENDER

Fender is used for safe docking of floating vehicles. Available in wooden, rubber or polyurethane material.

SPECIAL COATINGS

At FCP Marine, we offer custom coatings that can be freely designed according to your thoughts and dreams. With these coatings, you can customize your floating structure with any color, pattern or texture you want.

WOODEN

An attractive and practical alternative, natural wood or composite wood can be used depending on your preference. The wood option offers thermal insulation and a natural look.

STABILIZATION SYSTEM

Stabilization Systems, in order to ensure that floating piers remain stable on the water, vaulted, anchored and piled according to variable water conditions.

FLOATING SCAFFOLDIN MODELS



FcpAl Model

FcpAl aluminum, which is our most suitable product group for sheltered areas in lakes and breakwaters among floating structures, attracts attention with its lightness. In addition to the fast production process in the factory environment, field installation is very practical and easy. In this way, it allows users to realize their projects faster and more efficiently.

PRODUCT OPTIONS

FENDER

Fender is used for safe docking of floating vehicles. Available in wooden, rubber or polyurethane material.

SPECIAL COATINGS

At FCP Marine, we offer custom coatings that can be freely designed according to your thoughts and dreams. With these coatings, you can customize your floating structure with any color, pattern or texture you want.

WOODEN

An attractive and practical alternative, natural wood or composite wood can be used depending on your preference. The wood option offers thermal insulation and a natural look.

STABILIZATION SYSTEM

Stabilization Systems, in order to ensure that floating piers remain stable on the water, vaulted, anchored and piled according to variable water conditions.

ACCESSORY INFORMATION

ACCESSORY INFORMATION

CLEAT

Floating Structures utilize cleat, a reliable and durable material for mooring boats in the marine industry. This product allows floating structures to be used in a wide range of applications, from marinas to industrial facilities. Thanks to the high corrosion resistance of 316 stainless material, it offers a long-lasting service with its resistance to fresh water and salt water. It protects the structure up to 10 tons of weight against various weather conditions.



WOODEN FENDER

Floating Structures uses the fender to prevent damage to floating structures. This product can be used in a variety of areas, from boats to offshore platforms. Known for their high strength and easy installation, flat fenders provide a safe and solid support to the structure, preventing damage to the boat during docking, windy weather and rough sea conditions. Fenders are made of baked and impregnated wood. Baked and impregnated wooden fenders help to keep floating structures safe for many years with their sustainable structure.



BOLLARD

Bollards are an important mooring element used in the marine industry for the secure attachment of ships, boats and floating platforms. Made of steel, these bollards are coated with a galvanizing process to increase their corrosion resistance, making them long-lasting against the corrosive effects of seawater. They are commonly found on piers, docks and floating platforms and play a critical role in the berthing and anchoring of ships. Thanks to their high strength, galvanized bollards can carry large loads and ensure that ships are securely fastened. Thanks to their robust construction and durability, they offer a safe and effective mooring solution in maritime operations.



RUBBER FENDER

Floating Structures uses the fender to prevent damage to floating structures. This product can be used in various areas from boats to marine platforms. Known for their high strength and easy installation, fenders provide a safe and solid support to the structure, preventing damage to the boat during docking, windy weather and rough sea conditions. Rubber offers high resistance to impact, abrasion and weathering, which ensures the long life of rubber fenders.



ACCESSORY INFORMATION

ACCESSORY INFORMATION



POLYURETHANE FENDER

Floating Structures uses the fender to prevent damage to floating structures. This product can be used in various areas from boats to marine platforms. Known for their high strength and easy installation, fenders provide a safe and solid support to the structure, preventing damage to the boat during docking, windy weather and rough sea conditions. Polyurethane shows high resistance to impacts thanks to its flexible and rigid structure, abrasion thanks to its chemical resistance and weather conditions thanks to its thermal insulation, which makes polyurethane fenders long-lasting.

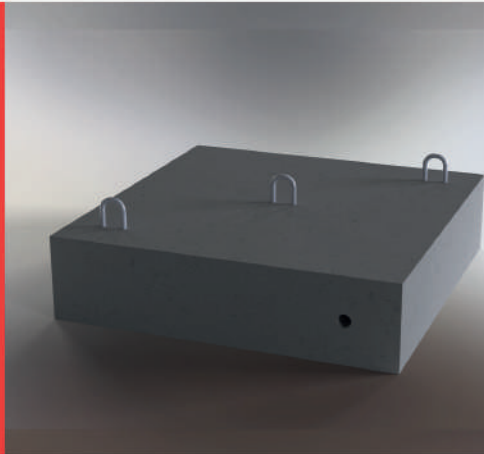


ANCHOR

Floating Structures uses the anchor for anchoring and positioning floating structures. This product can be used in areas ranging from yachts and boats to water sports equipment. Thanks to its high corrosion resistance and reliable adhesion, anchors securely anchor the structure and prevent it from moving. Furthermore, iron epoxy painted or hot-dip galvanized materials are used in the construction of the product, which increases its durability and longevity.

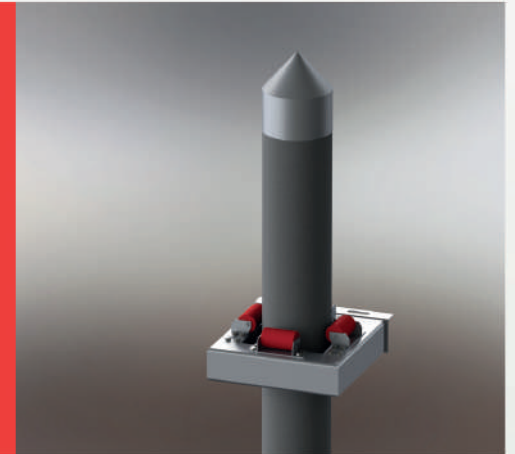
CONCRETE VAULT

Floating Structures uses the vault for the secure anchoring of floating structures and boats in the marine industry. This product is designed to meet heavy loads and harsh sea conditions and is manufactured from concrete and rebar. Thanks to its high strength, the structures attached to the vault are securely fixed and minimize movement in rough seas.



PILE

Piles are fasteners that support the movement of structures such as floating platforms or pontoons. Piles flexibly connect structures with the seabed to adapt to changes in water level and are usually made of steel or polyethylene. The size of piles can vary according to geographical conditions. Depending on the current state of the seabed, piles may need to be driven deeper.



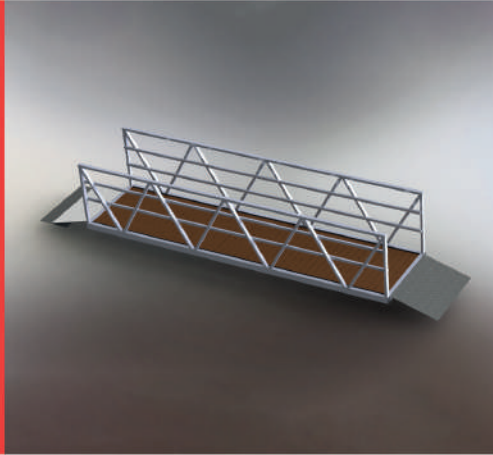
ACCESSORY INFORMATION

REFERENCES

AND FINISHED PROJECT

CROSSING BRIDGE

A crossing bridge is a bridge that connects two different structures or areas, usually designed for pedestrians to cross or for vehicular traffic. These bridges provide a safe and accessible way across difficult terrain or over bodies of water. Crossing bridges can be made from a variety of materials, but are usually constructed using composite decking, galvanized steel or aluminum. In their design, durability and safety are prioritized, while aesthetics are also taken into consideration. They can provide both temporary and permanent solutions and are frequently used in infrastructure projects, emergencies or large events.



CONNECTOR WHEEL

A connector wheel is a round, rotatable fastener used to connect concrete piers and pontoons. These wheels are inserted into special slots located at the ends of the scaffolds and fixed by rotation. It offers a quick and easy assembly and disassembly process, allowing the creation of modular structures.



Golden Horn Water Sports Club (Turkish Canoe Federation 2024)

FcpGrand75 3 x 15

Our FcpGrand75 floating concrete pier model, which we specially designed for the docking of luxury yachts and sports boats of Haliç Water Sports Club, offers elegance and functionality at sea. Our floating piers provide high stability and safety on the sea. It serves not only as a docking point for the Golden Horn Water Sports Club, but also as an aesthetic symbol on the

Scaffolding Stabilization System
Vaulted Connection

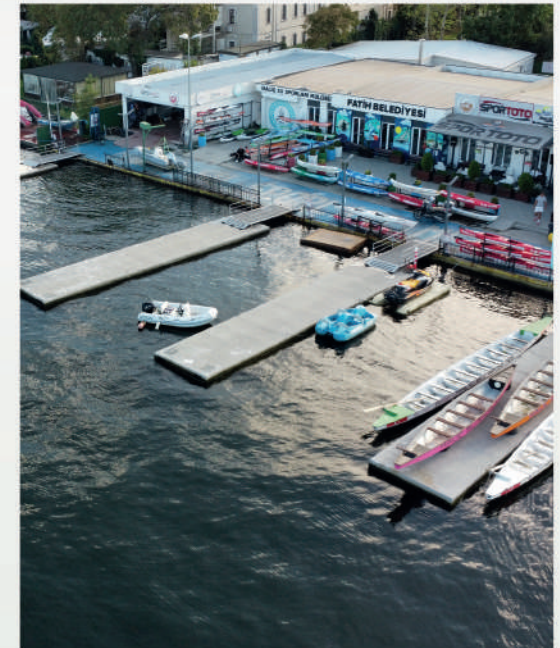
Area Of Use
Canoeing Sports

Height Above Water
30 cm

Width
3 m

Length
60 m

Weight Capacity
Amount Of Units Per 500 m² (Kg)



REFERENCES

AND FINISHED PROJECT

Izmir Maritime Police (İzmir Provincial Police Department 2019)

FcpGrand125 2,5 x 15 / Fcpal150 1,25 x 6

The special floating concrete pier we have developed for Izmir Maritime Police is designed to allow the officer in charge of docking Ares Class Boats to intervene quickly in emergencies.



Scaffolding Stabilization System

Vaulted Connection



Area Of Use

Police Boats



Height Above Water

50 cm



Width

2,5 m



Length

30 m



Weight Capacity

Amount Of Units Per 600 m² (kg)

REFERENCES

AND FINISHED PROJECT

Alanya Gold Marina (Gazipaşa Marina Services 2023)

Fcpgrand125 3 x 15

These unique piers, which cover all classes of boats, which we have specially designed to meet the need for a boat parking station that is missing in Alanya region, offer a perfect solution to Alanya's maritime needs with high quality and durability standards. With these features, Alanya Gold Marina offers a reliable solution where all boat classes can be parked comfortably.



Scaffolding Stabilization System

Pile Connection



Area Of Use

All Types Of Boats Use The Marina



Height Above Water

65 cm



Width

3 m



Length

375 m



Weight Capacity

Amount Of Units Per 700 m² (Kg)

REFERENCES

AND FINISHED PROJECT

REFERENCES

AND FINISHED PROJECT

Fethiye BNŞ Tourism Water Sports Center

FcpMini100

(Fethiye BNŞ Tourism 2024)

The floating concrete pier, which we specially produced for Fethiye BNŞ Tourism, which operates in the tourism sector, offers an ideal solution suitable for tourism boats and tourists fishing.



Scaffolding Stabilization System
Anchored Connection



Area Of Use
Tourism Boats



Height Above Water
30 cm



Width
20 m



Length
20 m

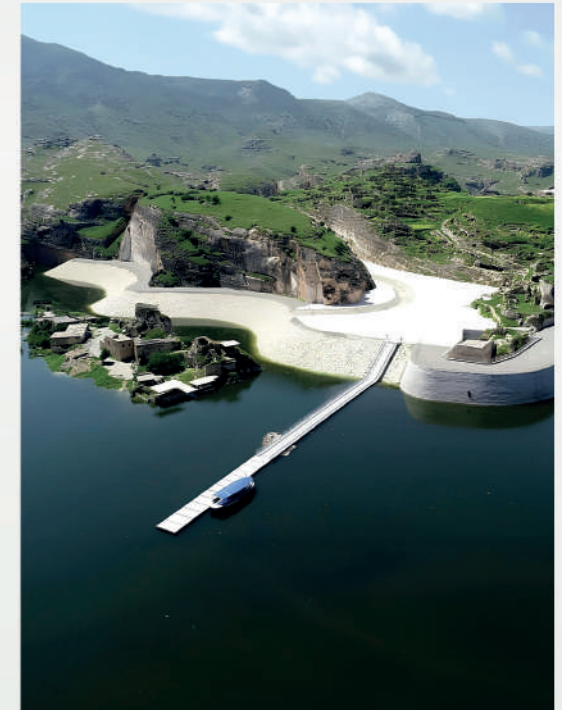


Weight Capacity
Amount Of Units Per 400 m² (Kg)

Hasankeyf (ICC Group Construction A.Ş 2020)

Fcpmini100 2,5 x 5

The floating concrete pier we have specially designed for Hasankeyf offers a unique experience to tourists who want to discover the unique beauty of historical Hasankeyf. This pier, which we produce as Hasankeyf Movable Marina, allows tourism boats to dock and allows our products to float separately in every water level difference in the dam.



Scaffolding Stabilization System
Vaulted Connection



Area Of Use
Tourism Boats



Height Above Water
40 cm



Width
2,5 m



Length
150 m



Weight Capacity
Amount Of Units Per 400 m² (Kg)

REFERENCES

AND FINISHED PROJECT

REFERENCES

AND FINISHED PROJECT

Edirne International (Turkish Rowing Federation 2024) Rowing Course

The various floating scaffolding solutions we offer as FCP Marine consist of special designs for different functions needed in racing and event areas. Compliant with international racing standards, these scaffolds increase safety and efficiency in every event with their durable structures and high performance capacities.



Scaffolding Stabilization System
Pile Connection

Area Of Use
Athlete Boats Exit System

Height Above Water
30 cm

Width
3 m

Length
900 m

Weight Capacity
300 kg

Start Exit Pier (FcpSteel43)

1.5 x 150 x 0,43 m

Pile Connection

Freeboard 0.28 m

Weight Capacity: Amount of units per 350 m²

Finger Scaffold (FcpSteel28 8-piece finger arm)

0,80 x 16 x 0,28 m

Freeboard 0.18 m

Weight Capacity: Amount of units per 280 m²

Boarding Pier (FcpSteel50)

1.50 x 1.20 m

Referee Boat Berthing Dock (FcpMini100)

5 x 5 x 1 m

Vaulted Connection

Freeboard 0.42 m

Weight Capacity: Amount of units per 440 m²

REFERENCES AND FINISHED PROJECT

Athlete Landing-Exit Pier (FcpSteel30)

4 x 24 x 0,30 m

Pile Connection

Freeboard 16 cm

Weight Capacity: Amount of units per 350 m²

Referee Boat Berthing Pier (FcpSteel33)

2 x 15 x 0,30 m

Vaulted Connection

Freeboard 0.18 m

Weight Capacity: Amount of unitser 300 m²



REFERENCES AND FINISHED PROJECT

Award Ceremony Pier (FcpSteel30)

3 x 60 x 0,30 m / 4 x 24 0,30 m

Vaulted Connection

Freeboard 0.18 m

Weight Capacity: Amount of units per 300 m²

Emergency Response Pier (FcpSteel30)

3 x 18 x 0,30 m

Vaulted Connection

Freeboard 0.18 m

Weight Capacity: Amount of units per 300 m²



REFERENCES

AND FINISHED PROJECT

REFERENCES

AND FINISHED PROJECT

Roketsan Ammunition Test Platform

Fcp Special production 2 x 5 x 28 (Roketsan 2024)

The Ammunition Test Platform, which we designed in cooperation with Roketsan, perfectly reflects the diversity and quality of our floating concrete piers with its high weight capacity. It offers an ideal solution for critical operations such as ammunition tests carried out at sea by prioritizing stabilization and safety issues.



Scaffolding Stabilization System
Anchor Connection

Area Of Use
Target Ship Testing Ammunition for UAVs and UCAVs

Height Above Water
80 cm

Width
5 m

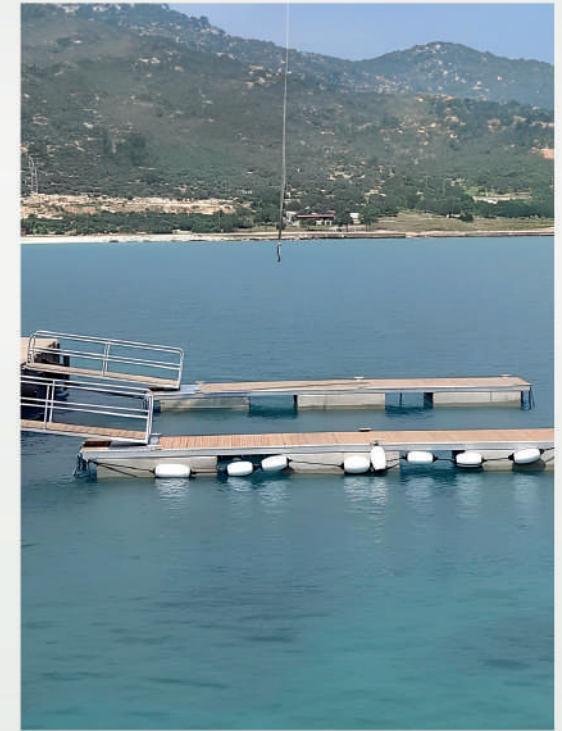
Length
28 m

Weight Capacity
Amount Of Units Per 1200 m² (Tons)

Aselsan Mersin (Aselsan 2021)

FcpSteel100 (with Concrete Floatation) 2,5m

The floating steel scaffolding we designed specifically for Aselsan Mersin offers the perfect solution for the Unmanned Naval Vehicles Defense Industry. This pier meets the needs of Aselsan Mersin by combining technological innovations and safety standards. Aselsan Mersin provides an ideal platform to meet the maintenance, repair and operational needs for unmanned naval vehicles.



Scaffolding Stabilization System
Vaulted Connection

Area Of Use
Unmanned Naval Vehicles Defense Industry

Height Above Water
50 cm

Width
2,5 m

Length
20 m

Weight Capacity
Amount Of Units Per 450 m² (Kg)

REFERENCES

AND FINISHED PROJECT

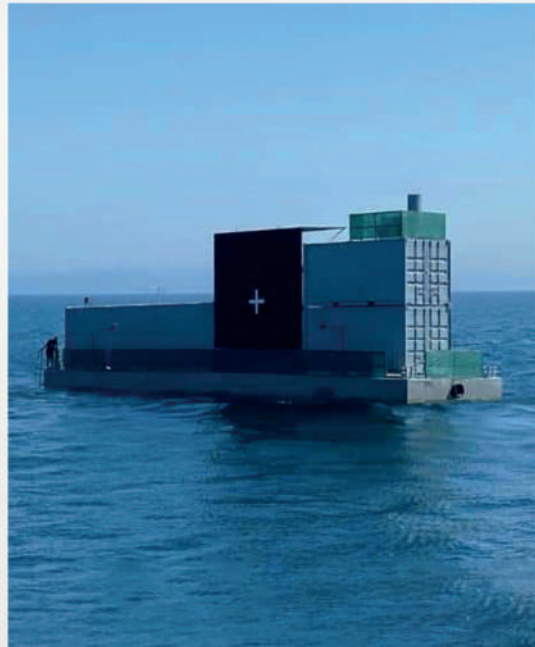
REFERENCES

AND FINISHED PROJECT

Tübitak-Sage Ammunition Test Platform

Fcp Special Production 2 x 5 x 28

The Ammunition Test Platform, which we designed in cooperation with Tübitak-Sage, perfectly reflects the diversity and quality of our floating concrete piers with its high weight capacity. By prioritizing stabilization and safety issues, it offers an ideal solution for critical operations such as ammunition tests carried out at sea.



- Scaffolding Stabilization System**
Anchor Connection
- Area Of Use**
Target Ship for UAVs and UCAVs
Ammunition Testing
- Height Above Water**
80 cm
- Width**
5 m
- Length**
28 m
- Weight Capacity**
Amount Of Units Per 1200 m² (Kg)

Samsun Coast Guard (Coast Guard Black Sea Regional Command)

FcpSteel60 2,5 x 13 m

Designed for the Coast Guard Black Sea Regional Command, FCPSteel60 Scaffolding System has been specially developed for the needs of coast guard boats. Offering superior performance in maritime operations by prioritizing safety and durability, this system draws attention with its stability and ease of use.



- Scaffolding Stabilization System**
Vaulted Connection
- Area Of Use**
Coast Guard Boats
- Height Above Water**
45 cm
- Width**
2,5 m
- Length**
13 m
- Weight Capacity**
Amount Of Units Per 400 m² (Kg)

REFERENCES

AND FINISHED PROJECT

REFERENCES

AND FINISHED PROJECT

Van Maritime Police (Van Provincial Police Directorate 2019)

FcpGrand125 2,5 x 15 m

We have maximized security and emergency response capabilities with the floating concrete pier specially designed for Van Maritime Police. Berthing of Ares Class Boats This pier, which aims to enable the officer in charge to intervene quickly in emergency situations, has an ideal usage area for Police Boats. Designed specifically for the needs of the Van Maritime Police, this pier will enable emergency interventions to accelerate its capacity to respond to incidents quickly and reliably increases.

- Scaffolding Stabilization System**
Vaulted Connection
- Area Of Use**
Police Boats
- Height Above Water**
55 cm
- Width**
2,5 m
- Length**
15 m
- Weight Capacity**
Amount Of Units Per 550 m² (Kg)



Van Deniz Polisi 2 (Van Provincial Police Directorate 2024)

FcpSteel60 2 x 10 m

As FCP Marine, the floating concrete pier we have specially designed for the Van Maritime Police has been developed to allow Ares Class Boats to dock and allow the officer in charge to intervene quickly in emergency situations. Providing a safe and robust platform with high quality and durability standards, this pier offers customized solutions to the needs of the sector. This special design is optimized for emergency response and safe berthing, in line with the operational needs of Van Maritime Police. As FCP Marine, we continue to develop safe and durable solutions specific to the sector.

- Scaffolding Stabilization System**
Vaulted Connection
- Area Of Use**
Police Boats
- Height Above Water**
40 cm
- Width**
2 m
- Length**
20 m
- Weight Capacity**
Amount Of Units Per 400 m² (Kg)



REFERENCES

AND FINISHED PROJECT

REFERENCES

AND FINISHED PROJECT

Bitlis Maritime Police (Bitlis Provincial Police Directorate 2023)

FcpGrand125 3 x 15m

As FCP Marine, our FcpGrand125 floating concrete pier model, which we have specially designed for Bitlis Maritime Police, has been developed to ensure safe and fast docking of Ares Class boats. Offering high stability with its vaulted connection system, this pier is designed to allow the officer in charge to intervene quickly in emergency situations. The superior durability of our pier has been carefully optimized to meet the operational needs of the Bitlis Maritime Police. This special design provides a safe and effective platform, increasing the speed of emergency response.

Scaffolding Stabilization System
Vaulted Connection

Area Of Use
Police Boats

Height Above Water
65 cm

Width
3 m

Length
15 m

Weight Capacity
Amount Of Units Per 700 m² (Kg)



Bartın Maritime Police (Bartın Provincial Police Directorate 2024)

FcpGrand125 3 x 15m

As FCP Marine, our FcpGrand 125 floating concrete pier model, which we designed for the needs of the Bartın Provincial Police Department Marine Police, enables police boats to dock safely and quickly. Thanks to the vaulted connection system, high stability and durability is ensured on the sea, which increases the safety of Bartın Provincial Police Directorate's operations at sea. Our pier serves as a critical infrastructure element in ensuring peace and security on the coasts of Bartın.

Scaffolding Stabilization System
Vaulted Connection

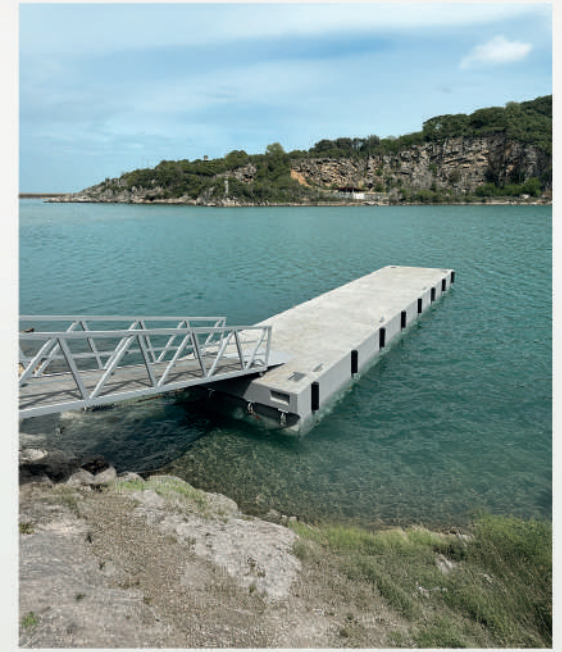
Area Of Use
Police Boats

Height Above Water
65 cm

Width
3 m

Length
15 m

Weight Capacity
Amount Of Units Per 700 m² (Kg)



REFERENCES

AND FINISHED PROJECT

Bodrum Seba Houses (Seba Construction 2023)

FcpGrand75 4 x 15m

FCP Marine has developed the FcpGrand75 floating concrete pier, specially designed for Bodrum Seba Houses, to provide an ideal solution for entering and exiting the sea. Designed to offer a lifestyle integrated with the sea, this pier provides a safe and robust platform with high weight capacity and superior durability standards. This special design has been optimized to support the seaside lifestyle of Bodrum Seba Houses and has been developed to ensure that users have a safe and comfortable experience.

Scaffolding Stabilization System
Vaulted Connection

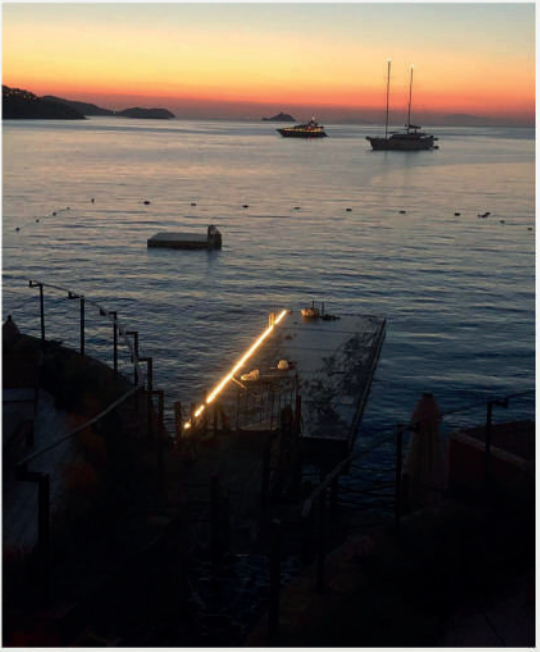
Area Of Use
Sport Activities

Height Above Water
30 cm

Width
4 m

Length
15 m

Weight Capacity
Amount Of Units Per 400 m² (Kg)



REFERENCES

AND FINISHED PROJECT

Bodrum Karatas Underwater Services (2024)

FcpGrand125 3 x 15m

As FCP Marine, our FcpGrand 125 floating concrete jetty model, specially designed for Bodrum Karataş Underwater Services, offers an ideal docking point for yachts and underwater vehicles. The vaulted connection system offers high stability and safety at sea, while the durability of our jetty has been carefully designed to meet the operational needs of Bodrum Karataş Underwater Services. This jetty serves as a high quality and safe berthing solution on the Bodrum coast.

Scaffolding Stabilization System
Vaulted Connection

Area Of Use
Police Boats

Height Above Water
65 cm

Width
3 m

Length
15 m

Weight Capacity
Amount Of Units Per 700 m² (Kg)



REFERENCES

AND FINISHED PROJECT

45' Catamaran Target Pier (Aselsan)

45' Catamaran

As FCP Marine, our 45' Catamaran Target Pier model, designed in cooperation with ASELSAN, has been developed to provide a safe and efficient platform for ammunition testing. Offering high stability and durability at sea thanks to its anchored connection system, this pier offers an ideal solution for critical ammunition tests.

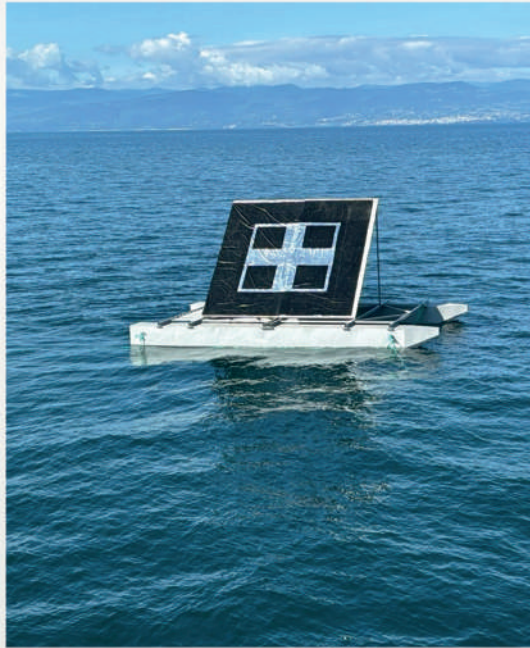
Scaffolding Stabilization System
Anchor Connection

Area Of Use
Target Ship for UAVs and UCAVs
Ammunition Testing

Height Above Water
60 cm

Width
5,8 m

Length
10 m



REFERENCES

AND FINISHED PROJECT

20 x 20 Floating Catamaran Target (Aselsan)

20 x 20 Catamaran

FCP Marine's 20 x 20 Floating Catamaran Target Platform, developed exclusively for ASELSAN, is designed to provide high safety and efficiency in ammunition testing. This special design is optimized to be used as a target platform and provides excellent performance in missions at sea, enabling critical tests to be carried out safely. Providing high stability and durability, this platform has been developed to meet ASELSAN's operational requirements.

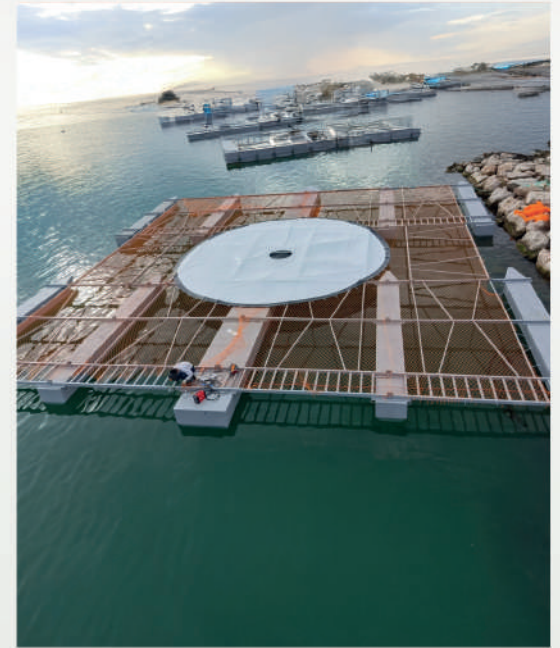
Scaffolding Stabilization System
Anchor Connection

Area Of Use
Target Ship for UAVs and UCAVs
Ammunition Testing

Height Above Water
50 cm

Width
20 m

Length
20 m



FCP MARINE

Floating Concrete Pontoons



info@fcpmarine.com.tr

info@fcpmarine.net

Gsm: 0(538) 293 38 09

Phone: 0 (212) 294 32 72

Factory: Söğütlü Mah. Şehitlik
Cad. No: 49/1A Seyhan / Adana

İstanbul Office: Seyrantepe Mah.
Cesur Sk. No:71 Kat:1-2
Kağıthane / İstanbul